


36 804 661



- 160mm projection
- fixed spout
- circular, air-enriched flow
- hole diameter 60 mm
- rosette Ø 78 mm
- max. flow 4.5 l/min
- lead-free
- with single-point mounting
- This product can help a building meet the requirements of Green Building Rating Systems, e.g. LEED®, BREEAM®, DGNB

|   |                               |                    |
|---|-------------------------------|--------------------|
|    | Chrome                        | 36 804 661-00 0010 |
|    | Brushed Platinum              | 36 804 661-06 0010 |
|    | Dark Chrome                   | 36 804 661-19 0010 |
|    | Light Gold                    | 36 804 661-26 0010 |
|    | Brushed Light Gold            | 36 804 661-27 0010 |
|    | Matte Black                   | 36 804 661-33 0010 |
|    | Brushed Bronze                | 36 804 661-42 0010 |
|    | Brushed Champagne (22kt Gold) | 36 804 661-46 0010 |
|    | Champagne (22kt Gold)         | 36 804 661-47 0010 |
|   | Brushed Chrome                | 36 804 661-93 0010 |
|  | Brushed Dark Platinum         | 36 804 661-99 0010 |

**Required miscellaneous**

|   |   |                       |
|---|---|-----------------------|
|  | <b>Concealed wall mounting -</b><br>•max. recess depth 103 mm<br>•min. recess depth 78 mm | 35 003 970-90<br>0010 |
|---|---|-----------------------|

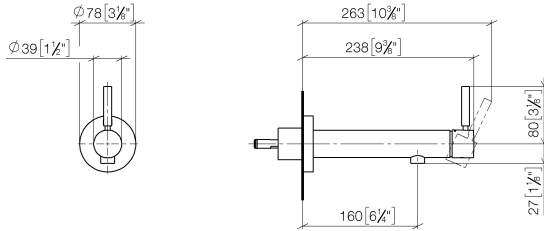


# META Wall-mounted single-lever basin mixer without pop-up waste - Chrome

META

36 804 661

mm [inches]



## Flow rate chart



## Codes & Standards

ADA

ASME  
A112.18.1/CSA  
B125.1

California Energy  
Commission  
(CEC)

NSF/ANSI 372

NSF/ANSI/CAN  
61

Water Sense





## META Wall-mounted single-lever basin mixer without pop-up waste - Chrome

---

META

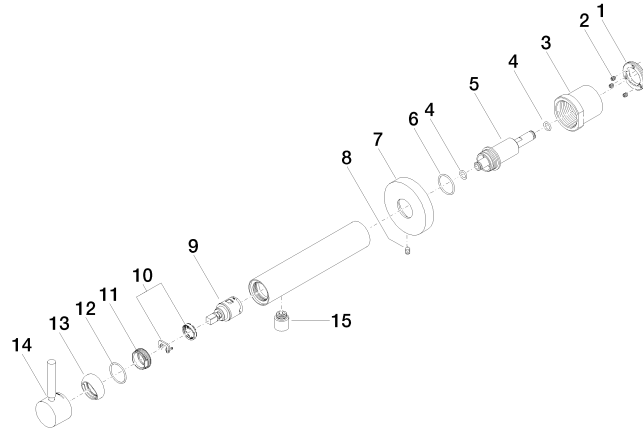
36 804 661

### Certificates

---

IAPMO\_N-4976 (2). IAPMO\_8834 (2). IAPMO\_6397 (2). IAPMO\_4976 (1).

36 804 661



**Spare parts list**

| No. | Item Number        | Name        | Quantity used | Delivery time |
|-----|--------------------|-------------|---------------|---------------|
| 1   | 09 24 77 002 90    | nut         | 1             | 2             |
| 2   | 90 31 11 030 00 90 | pin         | 3             | 2             |
| 3   | 09 21 02 128 90    | sleeve      | 1             | 2             |
| 4   | 09 14 10 139 90    | seal        | 2             | 2             |
| 5   | 09 24 04 210 10 90 | nipple      | 1             | 2             |
| 6   | 90 14 10 063 00 90 | seal        | 1             | 2             |
| 7   | 09 27 88 009-00    | rosette     | 1             | 10            |
| 8   | 09 31 11 144 90    | pin         | 1             | 2             |
| 9   | 90 15 05 042 00 90 | cartridge   | 1             | 2             |
| 10  | 90 28 10 148 00 90 | accessories | 1             | 2             |
| 11  | 09 24 04 266 90    | nut         | 1             | 2             |
| 12  | 09 14 10 120 90    | seal        | 1             | 2             |
| 13  | 09 28 30 043-00    | cover       | 1             | 10            |
| 14  | 90 20 66 009 00-00 | handle      | 1             | 10            |
| 15  | 90 23 01 168 01-00 | aerator     | 1             | 10            |